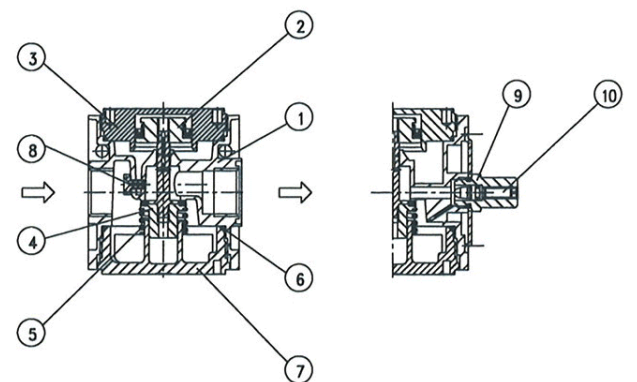



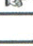


item	type	A 33 F		
port size		G 1/2		
description		seat valve, manipulation by secondary pressure		
mounting		arbitrary		
supply pressure		Pe max. 16 bar, Pe min. 2 bar		
aperture pressure		50% Pe (only for closed systems)		
media and ambient temperature		max. 60 °C (other temperature ranges upon request)		
nominal discharge		Qn 4000 l/min (Pe = 6 bar, delta P = 1 bar)		
fixing		bracket or 2 holes in the body		
weight		0,770 kg		



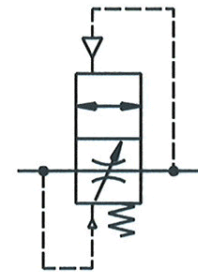


replacement parts  (repair kit: ESA-A.33)

no	description	material	order-no.
1	body	zinc - Z 410	---
2	plunger	NBR - Al	
3	bonnet	Al	---
4	valve cone	NBR - brass	
5	spring C.33-22	stainless steel	5.2133.22.000
6	O-Ring 50 x 2	NBR	
7	bonnet	PBT	---
8	slot bolt	brass	---
9	stem guide	NBR - brass	---
10	regulating spindle	NBR - brass	---

application information

- easy block assembly for components to be connected in series
- interlocking of several individual devices requires coupling kit(s) KP33
- interlocking of several individual devices with narrow distributor Z 33, requires coupling kit(s) KP33 Z
- by turning the regulating spindle the duration of filling is adjustable



series 3

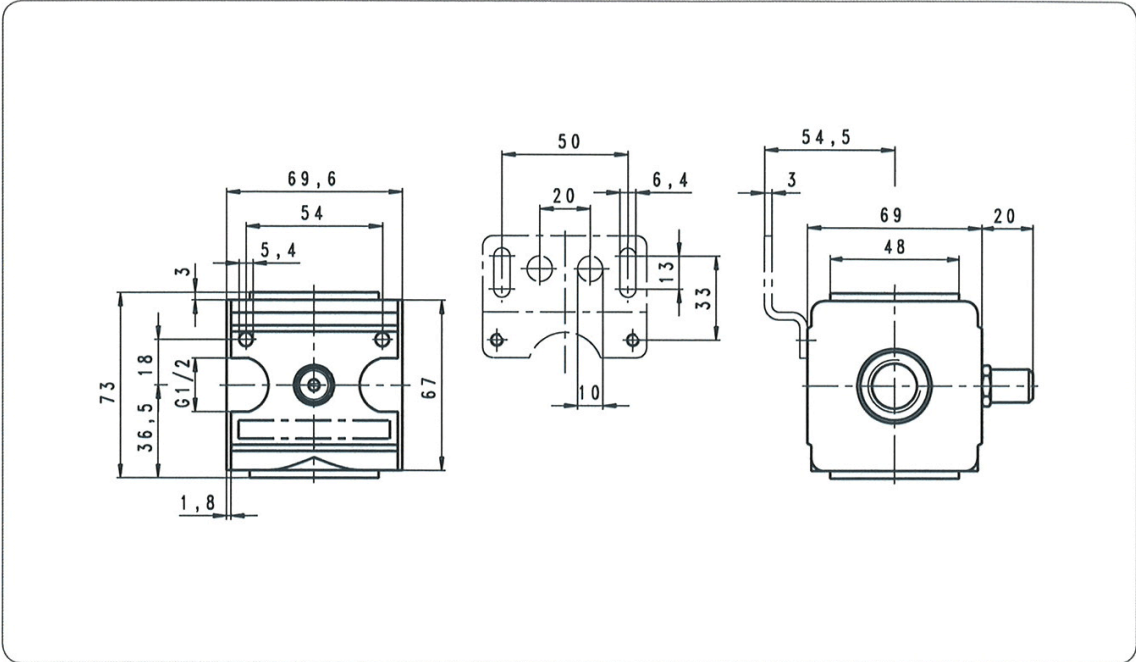
ordering information

A	33	F
type <input style="width: 80%;" type="text"/>	<input style="width: 80%;" type="text"/>	<input style="width: 80%;" type="text"/>
<input style="width: 80%;" type="text"/> 1 port size	<input style="width: 80%;" type="text"/>	<input style="width: 80%;" type="text"/> 2 option

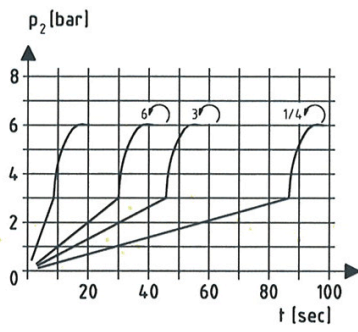
ordering example: A 33 F

1	port size	
	33	G 1/2
2	options	

dimensions (mm)

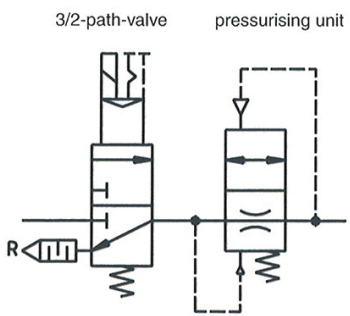


charging characteristics



Reference volume $V = 40$ l
 Duration of filling adjustable

various application



Aeration of the mechanery over throttle setting of the pressurising unit.
 When $P_2 \geq 50\%$ P1 opens full profile.
 Pressure release at R

accessories

mounting bracket type: ZW 33	